

ANSYS Workbench Meshing Course

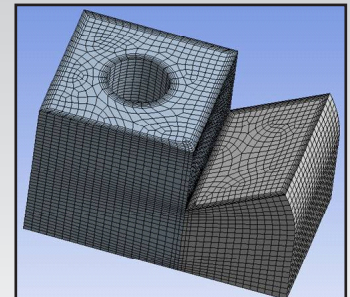
Växjö, September 16, € 590

With the release of ANSYS 12, there has been a lot of development within the ANSYS Workbench Meshing Application. New meshing algorithms, features and controls have been added to supply an even more powerful and easy-to-use Meshing Application.

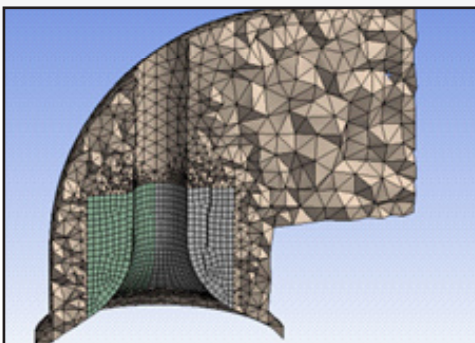
Don't miss this opportunity to join our ANSYS Meshing v 12 training course and become more effective with your meshing.

Course contents:

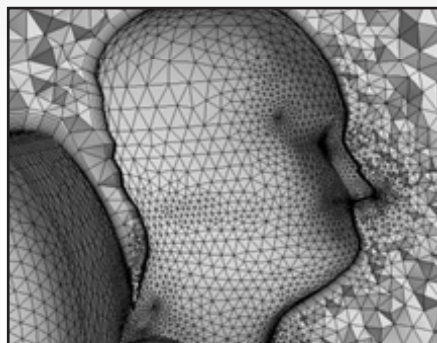
- Tetrahedral Meshing, Patch Conforming and Patch Independent
- Sweep meshing
- MultiZone meshing
- Automatic method, Combining Patch Conforming and Sweep
- Mesh Controls



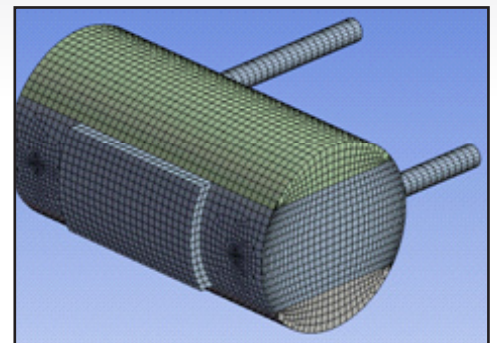
Swept mesh with inflation



Automatic method combining Patch and Sweep



Tetrahedral mesh with inflation



MultiZone method with automatic geometry decomposition

For registrations: www.medeso.se/forms/registration_training.html

For questions regarding this Training Course: info@medeso.se, +46 21 470 35 50