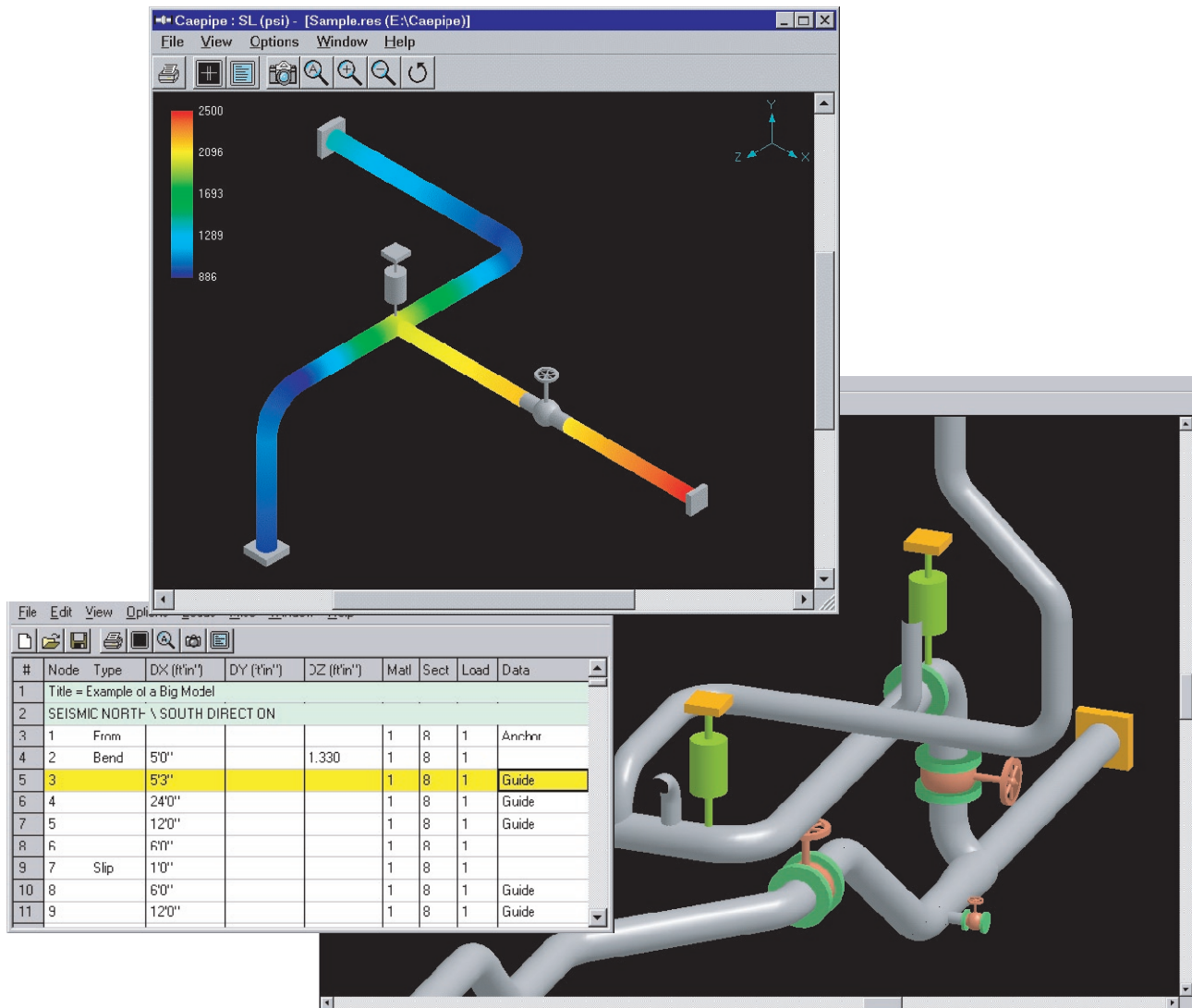


The most effective engineering tool for piping analysis: CAEPIPE for Win 95/NT



CAEPIPE offers a rich set of element types available to represent different components such as piping, branches, valves, hangers, piping support etc. Stress evaluation according to different piping codes (RN78, ASME ANSIS B31.1, B31.3 etc) is performed automatically, including a comprehensive printed report.

We also offer specialized software for Pressure Vessel analysis and stationary liquid or gas flow piping systems.

Visit us at www.medeso.se for further information